

Town of Mount Royal, Quebec, 1912

Planner: Frederick Todd

Background:

The Town of Mount Royal (TMR) is an independent suburb of Montreal that was created on the northern boundary of the city in the early 1910s by the Canadian Northern Railway. It was a real estate project to finance the construction of a three-mile tunnel under the mountain to downtown Montreal. TMR owes its design specifically to Montreal landscape architect Frederick Todd and, more generally, to the planning professionals and urban reformers of the time, such as Frederick Law Olmsted, Jr, with whom Todd interacted. A major influence on Todd's work came from the Garden City and Garden Suburb movement in Great Britain, but also from the City Beautiful Movement in the United States.

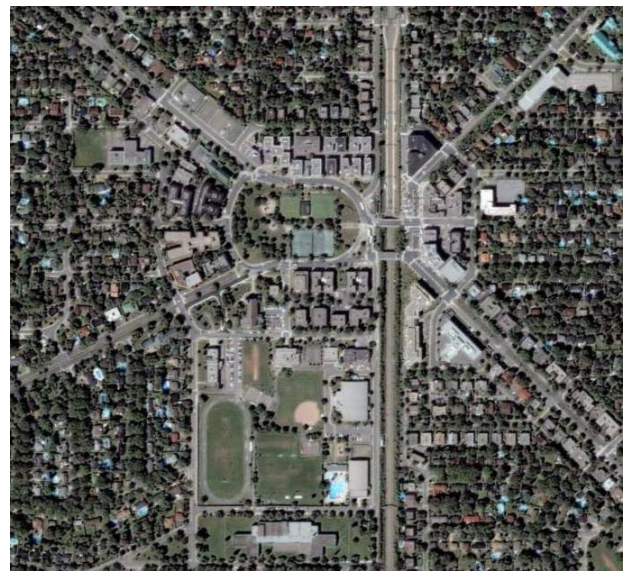
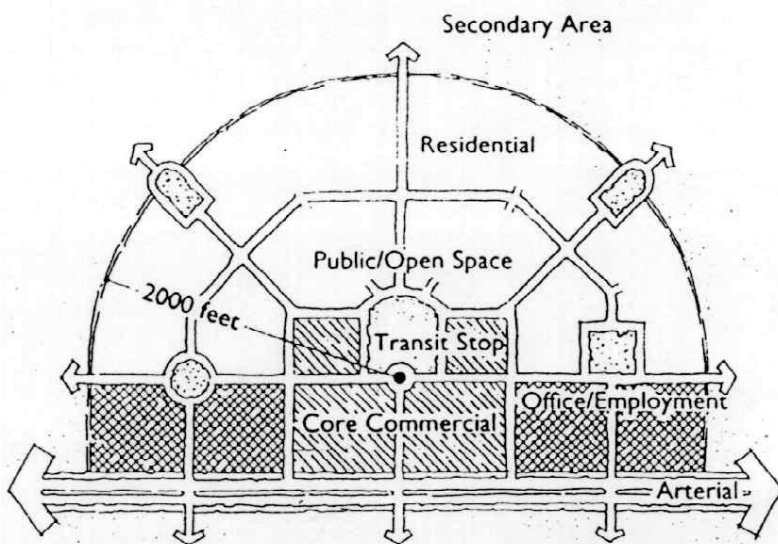
Key Design Principles: (a mixture of 3 modes of land use planning)

- 1) the gridiron plan (standard North American practice)
- 2) the system of diagonal boulevards superimposed on standard plans (City Beautiful)
- 3) the curvilinear street pattern (i.e. Riverside, Chicago by Frederick Law Olmsted)

Also...

- accessible public transit stations (Transit-oriented design); train station at centre of development
- grid oriented differently than that in Montreal: provides greater sun exposure
- network of parks and open / recreational spaces
- variety of housing types, with apartments located along major thoroughfares
- commerce and retail within walking distance of residences

Calthorpe's Transit-Oriented Development (TOD)



Additional Information:

The Town of Mount Royal: Official Site: <http://www.town.mount-royal.qc.ca/index.php?id=28>

McCann, L. 1996 "Planning and building the corporate suburb of Mount Royal, 1910 - 1925", *Planning Perspectives*, 11, pp. 259-301.

Rohan, D. 1992. "The Town of Mount Royal" in Wolfe, J.M. & Dufaux, F. (eds.) *A Topographic Atlas of Montreal*. Montreal: McGill: School of Urban and Regional Planning. Pp. 38-41.



THE CANADIAN NORTHERN MONTREAL LAND CO. LIMITED
 ROOM 304, 263 ST. JAMES STREET
 MONTREAL

MOUNT ROYAL
 THE MODEL CITY
 MONTREAL, P.Q.

SCALE OF FEET
 MALCOLM D. BARCLAY, Q.L.S., MONTREAL, P.Q.
 1914